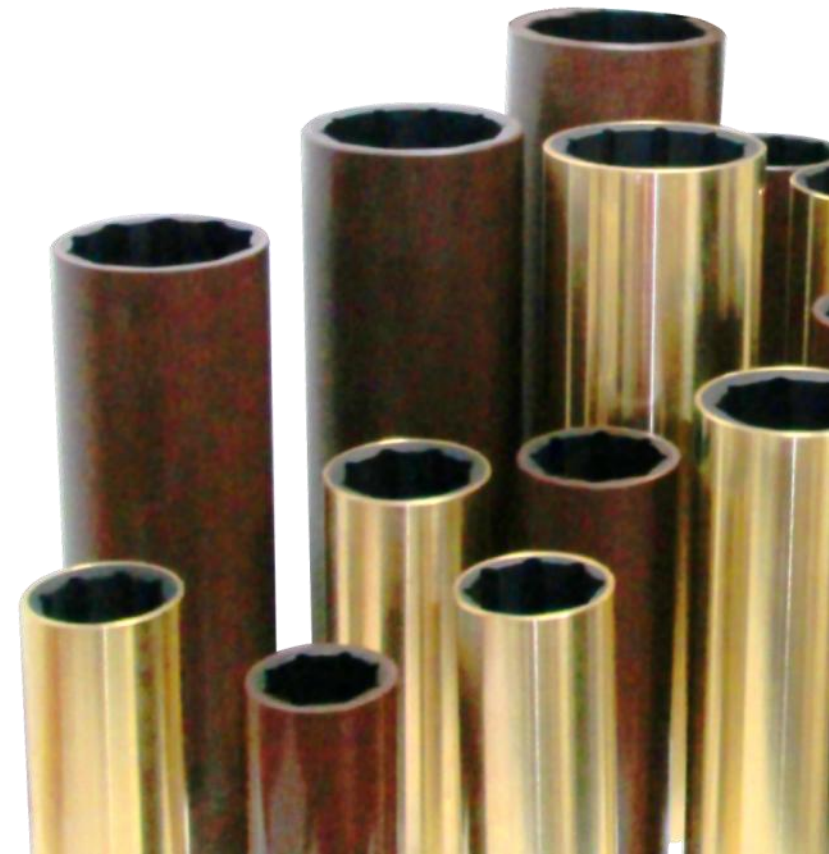




- Established in **1979**, **General Metals & Polymers** is an **ISO 9001:2008** certified organization, a manufacturer and exporter specialising in Cutlass rubber bearings.
- GMP has been supplying Cutlass bearings to the shipping industry, pump manufacturers, power plant's, their OEM's, OMS's & maintenance companies all across India, Middle East, Europe and Australia for over 30 years.
- - GMP is the first Indian company to indigenously develop WATER LUBRICATED BEARINGS for the Indian Navy in 1981



- GMP bearings are used in vertical pumps and marine shafts and cover a wide range of shaft diameters from **25mm to 400mm**. *(bespoke sizes can be made on request)*
  
- GMP bearings are used in
  - Cooling Water & ACW Pumps
  - Concrete Volute Pumps
  - Lift Irrigation pumps
  - Rudder Shafts
  - Desalination Plant Pumps
  - Condensate Extract Pumps
  - Propeller Shaft
  - Stern Glands

# GMP Range of Bearings

*Cylindrical*

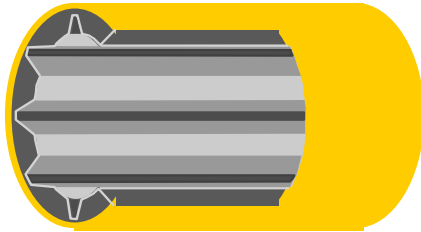


*Flanged*

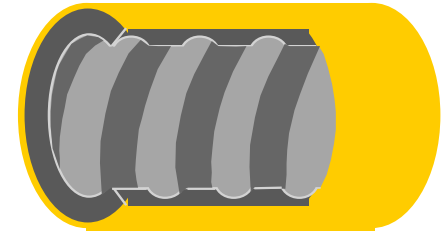


Cylindrical and Flanged Sleeve.

*Fluted*



*Spiral*

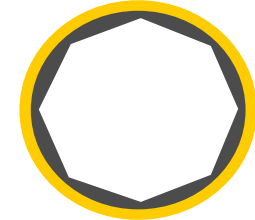


The inside rubber lining is Fluted or Spiral

*Circular*



*Polygonal*



Fluted in Circular or Polygonal Profile.

Available in metal or composite outer sleeve with Nitrile or Neoprene rubber lining.

# Types of GMP Bearings



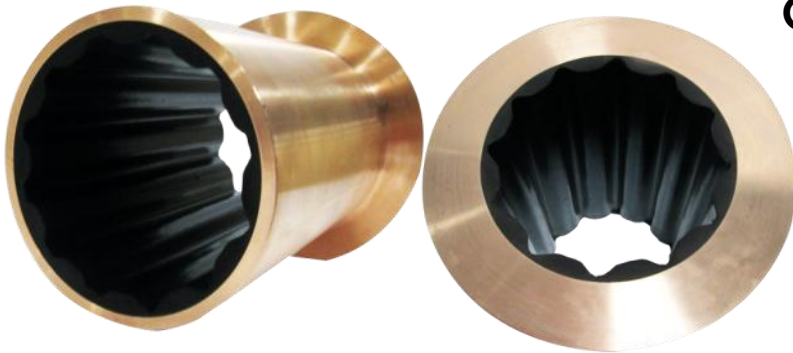
**GMP Metal Sleeve Bearing**  
(Brass/Bronze/Stainless Steel)



**GMP Spiral Groove Bearing**



**GMP Composite Sleeve Bearing**



**GMP Flanged Bearing**



**GMP Split Bearing**

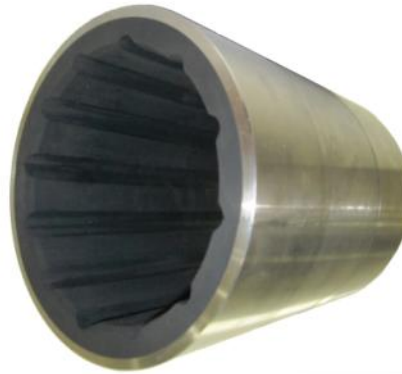
# Metal Sleeve Materials



**GMP Brass Bearing**

Grades:

LCB-1 (IS: 292)  
LCB-2 (BS 1400)  
DCB-1 BS 1400)  
DCB-3 BS 1400)  
ASTM B-135 C-27200



**GMP Stainless Steel Bearing**

Grades:

SCS 23  
AISI 316  
SS 316  
ASTM A276, UNS S32205  
ASTM A890-4A, UNS J92205



**GMP Bronze Bearing**

Grades:

LTB-1 (IS: 318)  
LTB-2 (IS: 318)  
LG-1 (BS 1400)  
LG-2 (BS 1400)



# Non Metal Sleeve Materials



- GMP Phenolic Bearings are made of proprietary composite materials developed by our in house R&D team.
- GMP Phenolic bearings can match the temperature range of other rigid alternate bearing materials to function at temperatures from -4°C to 70°C
- High temperature resistance and negligible swelling characteristics of GMP composite rubber bearings enable them to operate at a closer running clearance than any other bearing material. Abrasion measured according to DIN 53516 - RT(mm3 loss) : 30-80 & 150°C(mm3 loss) : 50-80.
- GMP composite bearings allow a dry start up of 2 min
- GMP Phenolic bearings are widely exported to Europe, Middle East and Australia.



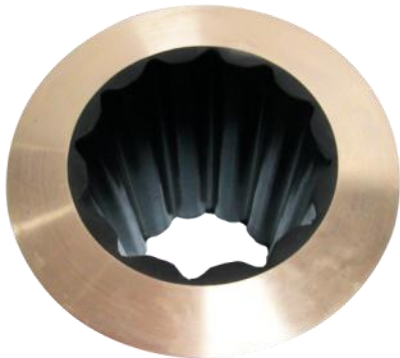
# GMP Flanged Bearings



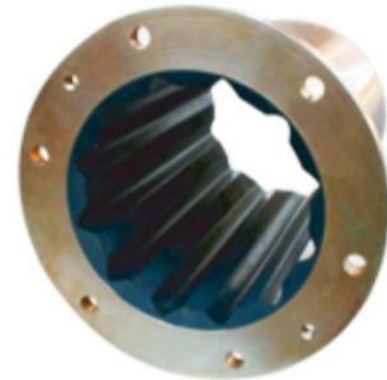
- Our Flanged Bearings are cast centrifugally with an integral flange, the shells are heavy walled.



- The flange provides structural strength to retain bearing and prevent rotation in housing.



- Shells are furnished un-drilled unless specified.
- Available in solid and split design.

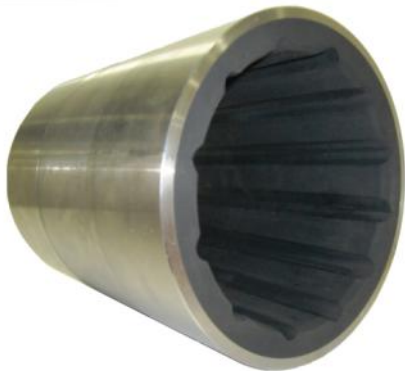




# GMP Split bearing



- Designed for easy fitment and extraction in bronze or stainless steel
- Shells are precision machined with keystone or dovetail races.
- Longitudinal water grooves run the full length of the shell to provide optimum water flushing and lubrication



# GMP bearings samples



Testing and quality control is conducted at our lab equipped for

- Tensile testing
- Elongation testing
- Abrasion testing
- Friction testing
- Swelling testing



The QC department is equipped with dimension checking equipment and gauges. Every GMP bearing is checked for dimensional accuracy.



# A few of our Customers



HELLENIC PROPELLERS L.T.D

